

XC -109

XC - 109 Rs. 770/-
SHOULDER JOINT
LIFE SIZE

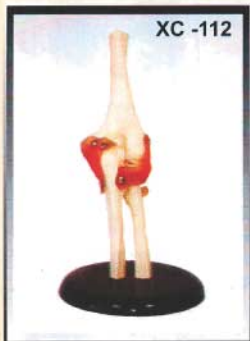
An instructional model to illustrate abduction, anteversion, retroversion and internal/external rotation. Includes flexible, artificial ligaments. Made of PVC plastic. On Stand.



XC -110

XC - 110 Rs. 770/-
HIP JOINT
LIFE SIZE

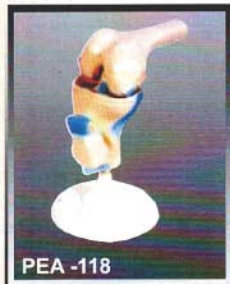
Demonstrates anteversion, retroversion, abduction and internal/external rotation. Include flexible, artificial ligaments. Made of PVC plastic. On Stand.



XC -112

XC - 112 Rs. 770/-
ELBOW JOINT
LIFE SIZE

Demonstrates flexion, extension and internal/external rotation of the radius. Include flexible, artificial ligaments. Made of PVC plastic. On Stand.



PEA -118

PEA - 118 Rs. 1650/-
KNEE FUNCTIONAL JOINT
LIFE SIZE

An instructional model to illustrate the ligament connections. Fully flexible joint to demonstrate abduction, anteversion, retroversion and internal/external rotation.. Made of PVC plastic. On Stand.



XC -111

XC - 111 Rs. 770/-
KNEE JOINT
LIFE SIZE

Demonstrates flexion, extension and internal/external rotation. Include flexible, artificial ligaments. Made of PVC plastic. On Stand.



XC -114

XC - 114 Rs. 770/-
HAND JOINT
LIFE SIZE

Demonstrates all of hand functionality and the external anatomical structures. Made of PVC plastic. On Stand.



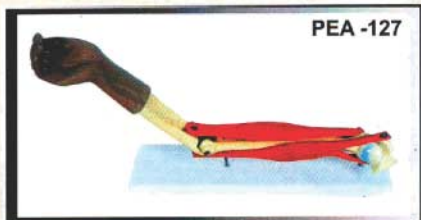
XC -113

PEA-127 Rs. 1950/-
FUNCTIONAL ELBOW JOINT LIFE SIZE

Life size. Shows the shapes and correct origins and insertions of biceps & triceps. Biceps and triceps are made of flexible material, extension and flexion can be shown as well as the antagonist relationship of these two muscles. On base.

XC - 113 Rs. 770/-
FOOT JOINT
LIFE SIZE

Demonstrates all of foot functionality and the external anatomical structures. Made of PVC plastic. On stand.



PEA -127